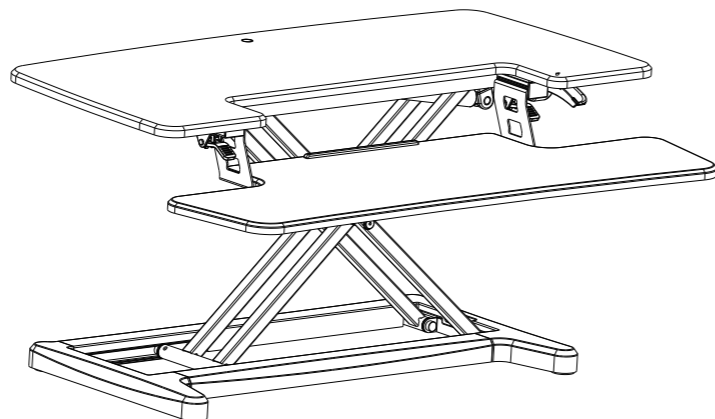
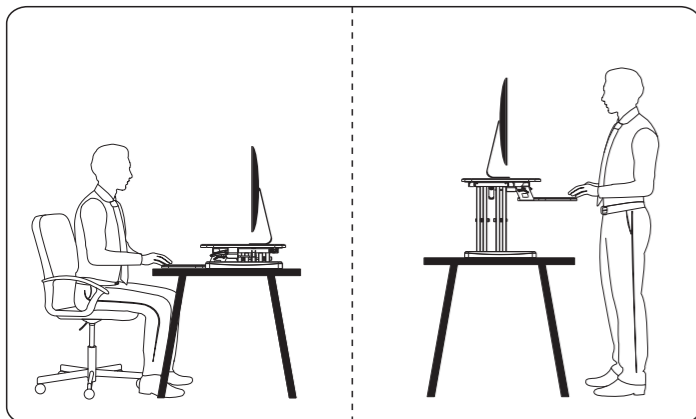
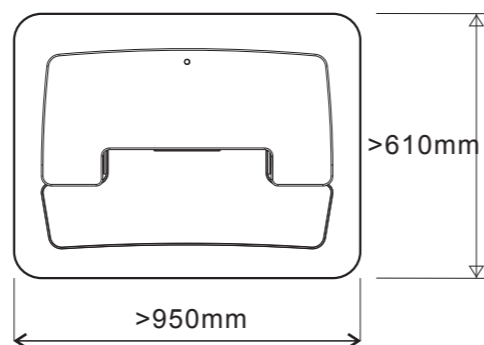
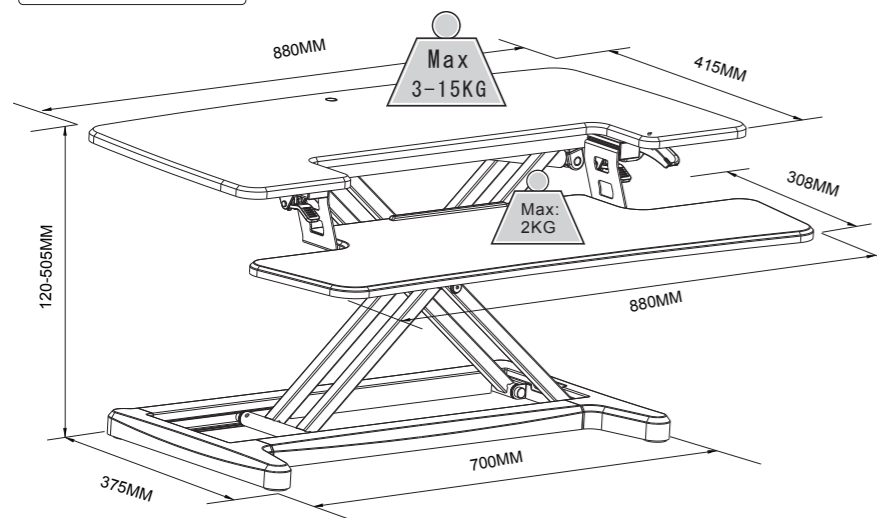


Item No.: Freelift Sit-Stand Workstation Installation guide



Technical Data

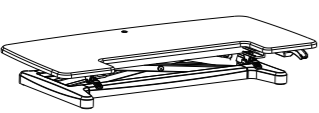
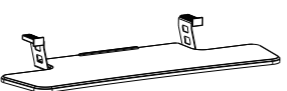

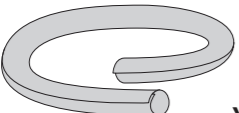
Table cover size:



WARNING Please do not exceed the maximum WARNING bearing weight

Loading range	3~15Kg
Height adjustment range	120~505mm

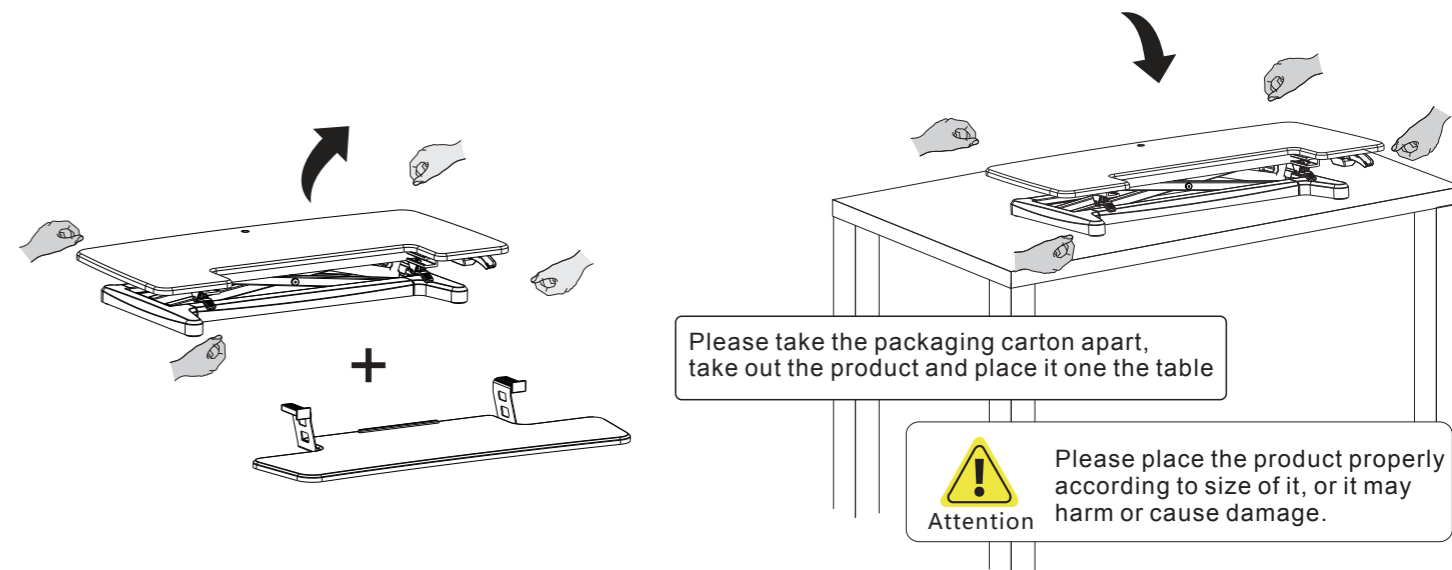
Accessory Package List

No.	Spare part	No.	Spare part	No.	Spare part
A	 x1	B	 x1	C	 x4
No.	Spare part				
D	 x1				

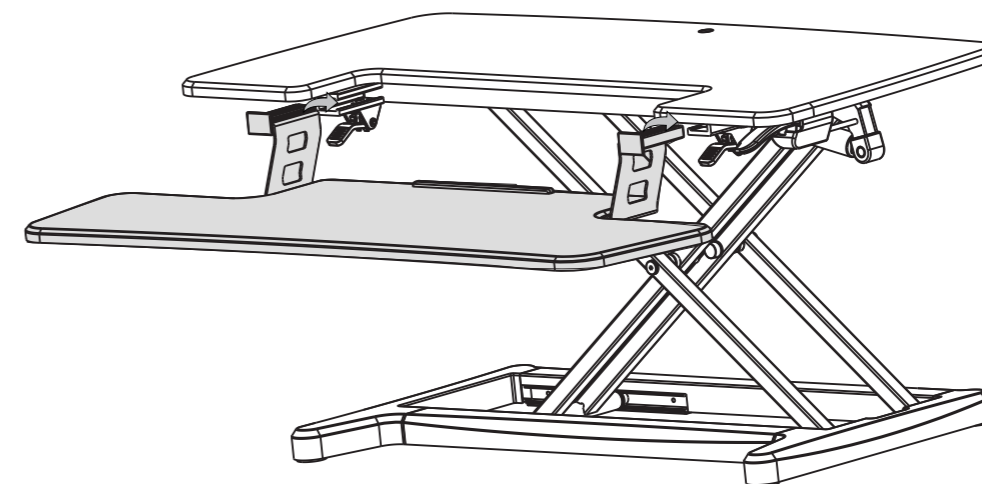
TOOLS



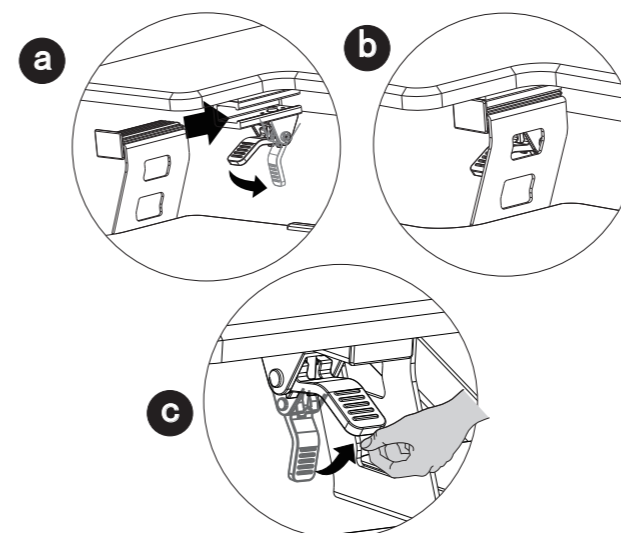
ASSEMBLY STEP 1



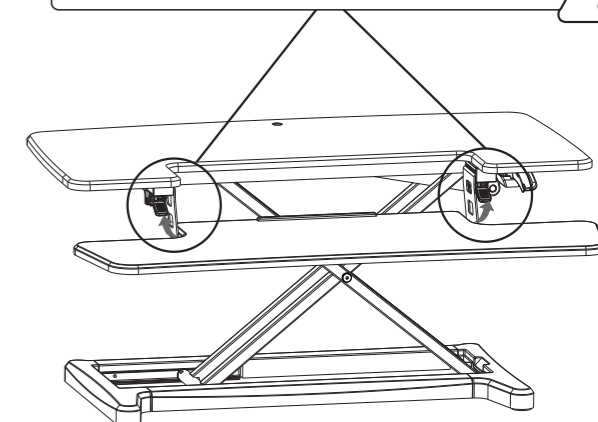
ASSEMBLY STEP 2



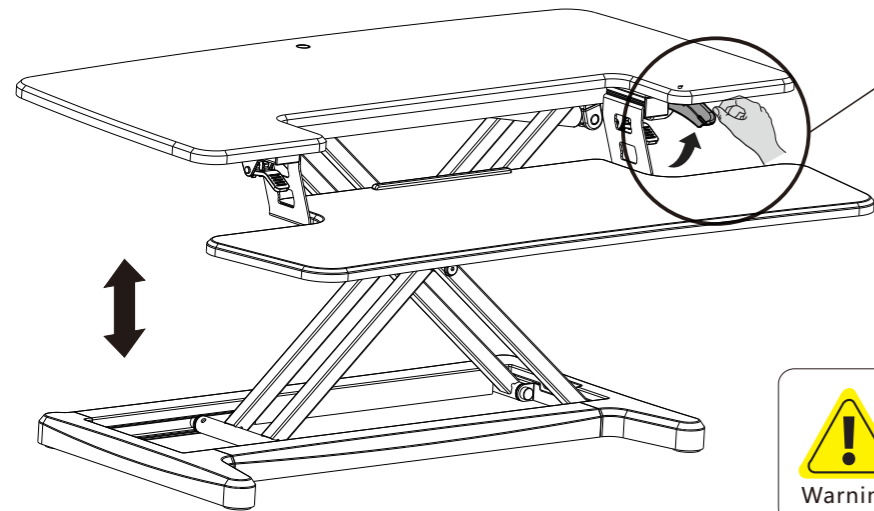
Push the keyboard tray connector into the slot and lock it



When removing the keyboard tray, please open the wrench and remove it. **!**



ASSEMBLY STEP 3

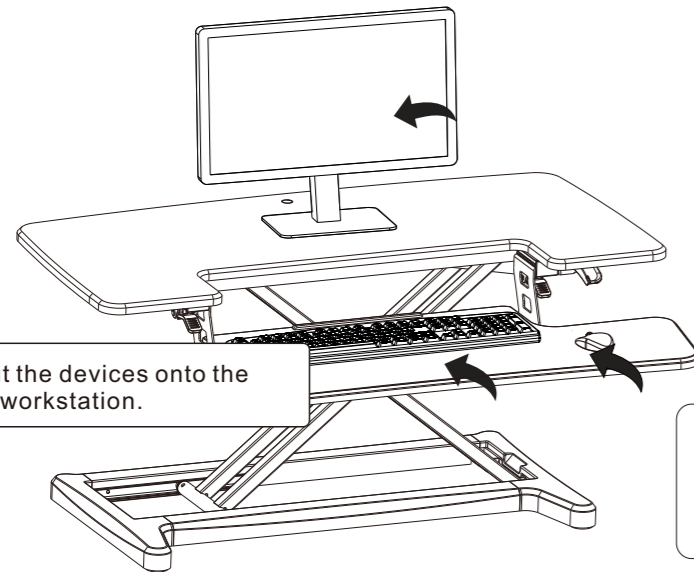


Based on the actual usage, press the handle on one side, and adjust the workstation to the proper height

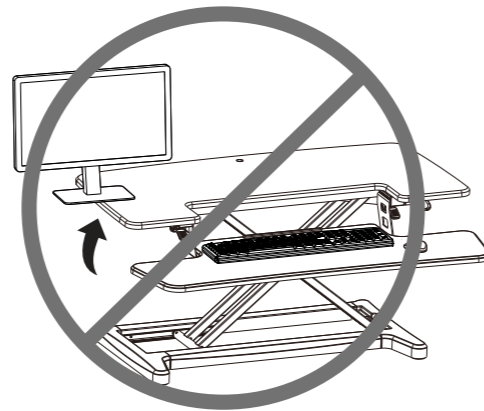


Please do not put hands near the supporting bars, as they change during adjusting and may hurt you.

ASSEMBLY STEP 4

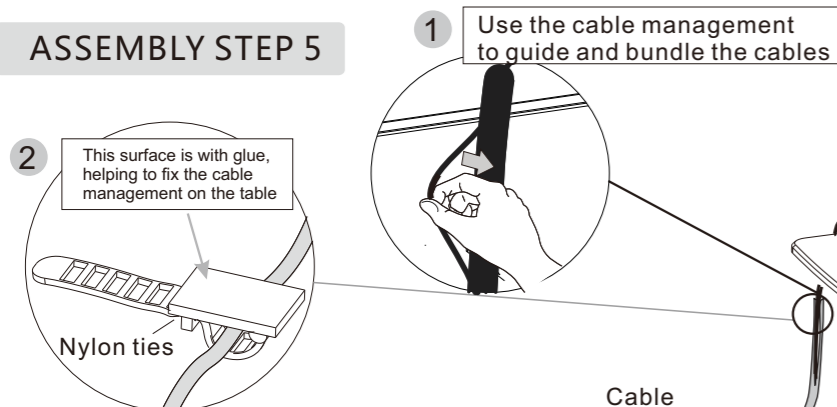


Please put the devices onto the top of the workstation.



Please make sure all installed equipments are on the table, and not sticking out of the edge, or it may harm or cause damage.

ASSEMBLY STEP 5



Cable



Adhesive buckle helps to make the cables tidy and clean. Please leave enough length of cable for height adjustment function, otherwise it may cause unexpected lost.

WARNING

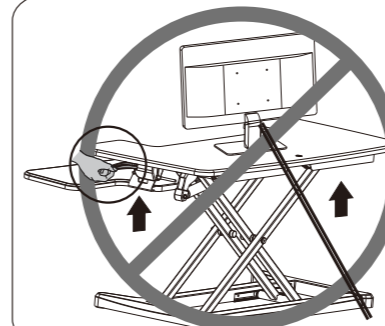
Hands Pinching
Do not place your hand near the strut.
Strut's angle will change during the desktop lifts and it may hurt you.



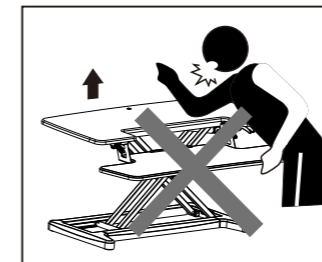
Please do not put hands near the supporting bars, as they change during adjusting and may hurt you.



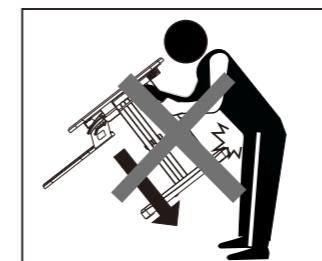
Please make sure all installed equipments are on the table, and not sticking out of the edge, or it may harm or cause damage.



Please leave enough length of cable for height adjustment function, otherwise it may cause unexpected lost.



Please first adjust it to the highest, then remove equipment to avoid harm or damage.



Please move it by two persons, or parts may collide and cause damage.